

Hinxton the News

September 2018

Issue No 416



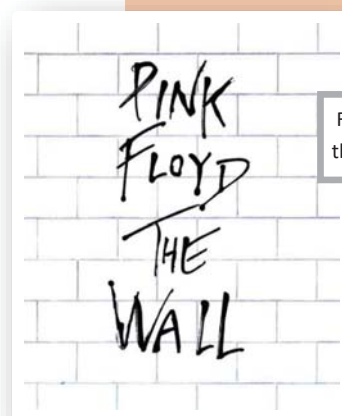
Contents

features

4	George Baillie
5	Message from Petra
9	SPOTLIGHT
17	Macmillan Coffee Morning
20	IRONMAN
22	Simon's Recipe
23	Rosemary & Phil Garden Tips
24	Diary Future Events

events

11	Ride Drive & Stride
14	Wetland Walk
17	MacMillan Coffee Morning
14	Bingo for Vegetables



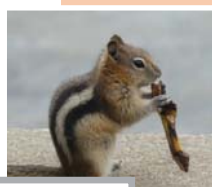
Front Cover based on the 1982 album sleeve



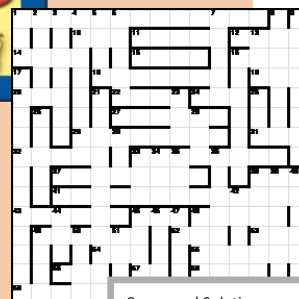
MacMillan Coffee Morning



Delayed a week to 14th



Holiday Snaps p.13



Crossword Solution page 12

Hinxton News is an independent village newsletter, established and run by volunteers.

Its mission is to inform residents of local issues and to maintain and promote community spirit.

Delivered free to approximately 170 Hinxton households.

Disclaimer

The Editors are not responsible for the opinions expressed by contributors nor do they accept responsibility for the accuracy of information contained in the advertisements.

Copying facilities and paper are generously provided by the Wellcome Trust.

HINXTON NEWS EDITORIAL TEAM

Mike Boagey 85 High Street CB10 1QY
530216
mikeboagey666@gmail.com

Theresa Sullivan 89 High Street CB10 1QY
531533
news@hinxtonvillage.co.uk

Jane Chater The Oak House, High Street CB10 1QY
530245
janechater@gmail.com

from the Editor

Sadly, George Baillie passed away at home at the end of August. We all learned a lot about George through the **Spotlight** feature in January this year but older residents can testify to his unselfish and enthusiastic approach to helping others and supporting the village in a practical way. Our thoughts are with Julie.

Last month, owing to illness, we lost the help of our good friend Marc Folland to print the Hinxton News. Fortunately Alison King stood in and our magazine was printed just in time. Thanks Alison for her heroic effort and happily Marc is well again and ready for action. We should not underestimate the value of this help from the Campus.

On a particularly hot day in August I was chatting to a neighbour on our forecourt but we had to move away owing to the nasty niff coming from my rubbish bins. This prompted a swift phone call to BINWASH, then within hours a team of smartly dressed fellas turned up and did the business. Later I got to meet Jack Hutchinson, the owner, and you can read the result on page 16. *Our bins have never smelt sweeter.*

Since 2007 **Rosemary and Paul Breen** have organised the Macmillan Coffee Morning. It has become a firm date in our calendars. This year **Ian and Sarah Pearson** have taken up the challenge and the venue will be Church Green Cottage. They will follow exactly the same format with **Bring and Buy** and **Cakes** and the customary **Raffle**. Please support this worthy charity with your bric-a-brac and a bit of baking.

Unfortunately, the Mystery Tour will forever remain a mystery as there was insufficient demand to carry it through but please still register your interest in the Ely shopping outing in December (page 7). This will be a shorter trip with an early return home. The cost of the coach is going to be dependant on numbers but not less than £ 10 each. An organised visit to the cathedral will be an optional extra cost.

There have been some recent activity regarding the various planning developments. These threaten to completely blanket the lovely countryside stretching from the Sawston roundabout, across the fields the other side of the A1301 and all the way past Great Chesterford. The worst case scenario will surround the village with a factory estate the size of Amazon's warehouse in Milton Keynes, a Company Village of 1500 dwellings with industrial offices and research blocks and a housing estate which will resemble the horrific developments we see going up north of Cambridge. *Surely all three things cannot be allowed ?* The real fight is probably beyond our control and will end up in legal wrangles but we must support our representatives in every way we can. There is a move for the Wellcome planning initiative to be formally presented to the Parish Council in October.

Owing to holidays the Bingo for Vegetables has been delayed a week to the 14th September. Sorry dibbers.

Mike

GEORGE BAILLIE 1925-2018

On Tuesday 21st August George Baillie died and Hinxton lost a very special member of the community after nearly 40 years as a resident here.

Virginia and I first met George in 1987 when we went to live in Canada. We had decided not to sell William House in the hope of returning one day and we needed somebody to look after the garden which we thought would be too much of a commitment for potential tenants. We knew Julie through church and she knew of our needs in this respect. After a few days she said 'I think I have just the person for you if you are still looking. I will let you know who in a day or two'.

And so we met George, recently retired, and looking for something to do other than walking to Ickleton and back daily. And so began a period of twelve years in which George gardened and took care of the house for us in so many ways. He was reliability and dependability personified. The chimney fell from the roof, a ceiling caved in, the kitchen flooded and the boiler broke down and still George arranged for everything to be taken care of in his calm and capable way. From 3,500 miles away we were totally confident that everything was in good hands. And just as George was a saviour for us, so also began a long period in which he rebuilt kitchens, sorted out floor coverings, painted and decorated rooms and generally helped a very great number of people in the village. Unlike Julie, George was not much into the church but typically he was supportive. Especially, he was keen to see things work properly. The church clock had stopped working for many years, how long is not certain, but George and Martin Fordham set about getting it going again. After lathering the workings in grease, the clock started working again and has done so ever since. For six years or more George, now in his seventies, climbed the inside of the tower on a vertical ladder (no safety cage) to the clock floor to wind it each week. He was instrumental with Bill Knight (who set up The Friends of Hinxton Church) in the acquisition of a second ride-on mower and a strimmer to tend the churchyard and with Bill and Frank Goodwin he replaced the fencing on the field side of the churchyard. He was also part of the team that built the bridge over the river down Ancient Lane, so he has certainly left his mark on this village.

He was a true Scotsman; nothing was wasted and thrown away unless it really was rubbish. He was a simple and straightforward man and his needs were not extravagant. He enjoyed a good meal and a glass of wine with it but nothing ever to excess. Again, being a Scotsman, he was economical in his use of language – never ten words where five would suffice!

Sadly George began to lose his sight some years ago and by the time of his death was almost totally blind. This, and not being able to be the active man he had been, were real frustrations for George. He was never so happy as when he was solving problems for other people. There can't be many households in Hinxton who did not benefit from his patient analysis of the problem and his careful installation of the remedy.

He had a gentle sense of humour and a chuckle. He was kind and thoughtful and rarely had a bad word to say about anyone. It has been a year or two now since the days when he was active in his Mr Fix-It role – and we are inclined to say 'what a pity George can't do that'!

Well, George, we just say a big thank-you for all that you did and how well you did it. You were a big man in stature and in good heartedness and you leave a big imprint behind you and a gap in our lives especially for dear Julie for whom you were constancy itself.

Andrew Walker

A message from Petra

One of the special things that Grandparents are often able to do with their grandchildren is to tell them stories; stories about their own childhood, about their parent's childhood, stories that their own parents and grandparents told them. It gives children a sense of being rooted in a family history that has shaped the identity of those around them and shapes their identity. Sometimes as stories emerge, they explain why something is as it is, why people think and behave the way they do.

As we approach the 100th anniversary of the end of the First World War, many villages like ours are digging back through history and recounting stories of the men who went to war and the people who remained at home keeping the home-fires burning. These are the stories that shaped villages and towns, that shaped and reshaped families as one much-loved member didn't return. There are those too, who returned with body or mind maimed – who returned, not as the people who had set out months before, changed sometimes almost beyond recognition.

All these stories are important to help us to understand where we, collectively and individually, have come from and who we are. They are handed down to us and we will tell them to our own children and grandchildren.

The Bible is also a collection of books that tell the story of how a people came into being and discovered its identity. These are not 'histories' documenting events as they happened, but stories that explain the meaning behind what happened. Sometimes they are stories about things that could not, or cannot, be understood; how the earth came into being, for example. The stories explore where God was at work and how the behaviour of the people affected the outcome of a situation.

These are stories that have shaped our society, our laws and ethics. Whatever we believe, the Bible has had a massive influence on our lives and our identity. One of the Psalms, set for this morning as I write, says this:

I will utter dark sayings from of old, things that we have heard and known, that our ancestors have told us. We will not hide them from their children ... He established a decree in Jacob, and appointed a law in Israel, which he commanded our ancestors to teach to their children; that the next generation might know them, the children yet unborn, and rise up and tell them to their children, so that they should set their hope in God.

There are many children – and adults – who no longer know the stories from the Bible. There is not a human emotion, a human story of joy or tragedy that is not addressed somewhere in its pages. The Bible speaks into some of the most difficult situations today; personal, political, local and international. It shows how corruption and selfishness can bring people down and how love is stronger than hate, more

powerful than death.

And so, in September, we are beginning a new programme of activities for children in church. At three of our 10.00 services a month there will be storytelling, crafts, singing and talking. It's called 'al2gether on Sundays', is suitable for children aged 2-9 and all are welcome. Also in September there will be a new programme for 'Youthinc' for 9+ on the second Sunday of each month at 6.00. For dates and venues for 'al2gether' and 'Youthinc' please check the website www.hinkledux.com or for more information, please email petra@hinkledux.com

Of course, stories are not only for children, so we also have a course of conversations based on Mark's Gospel called 'Unlocking the Word'. These are on Tuesday mornings, 11th & 25th September, 9th & 23rd October and 13th & 27th November at the Rectory, 13, St John's Street, Duxford. We will begin with coffee/tea and cake. There is no need for any expertise and no question is too silly. It's about listening to the story, sharing insights and seeing how relevant the Bible is for us today.

Sevices in September

- | | |
|----|---|
| 2 | 8.00 Holy Communion BCP Duxford |
| | 10.00 am Parish Communion Ickleton |
| | 6.30 Evensong BCP Hinxton |
| 9 | 8.00 Holy Communion Hinxton |
| | 10.00 Al2gether service Duxford |
| | 5.00 Taize Ickleton |
| 16 | 8.00 Holy Communion BCP Ickleton |
| | 10.00 Parish Communion with |
| | Al2gether for children Hinxton |
| | 6.30 Service of Healing and wholeness Duxford |
| 23 | 8.00 Holy Communion BCP Hinxton |
| | 10.00 Parish Communion with Al2gether Duxford |
| | 6.30 Evensong BCP Hinxton |
| 30 | Five Parish Eucharist Pampisford |

ALL ARE WELCOME Petra Shakeshaft Priest-in-charge mail petra@hinkledux.com or phone 01223 832 137

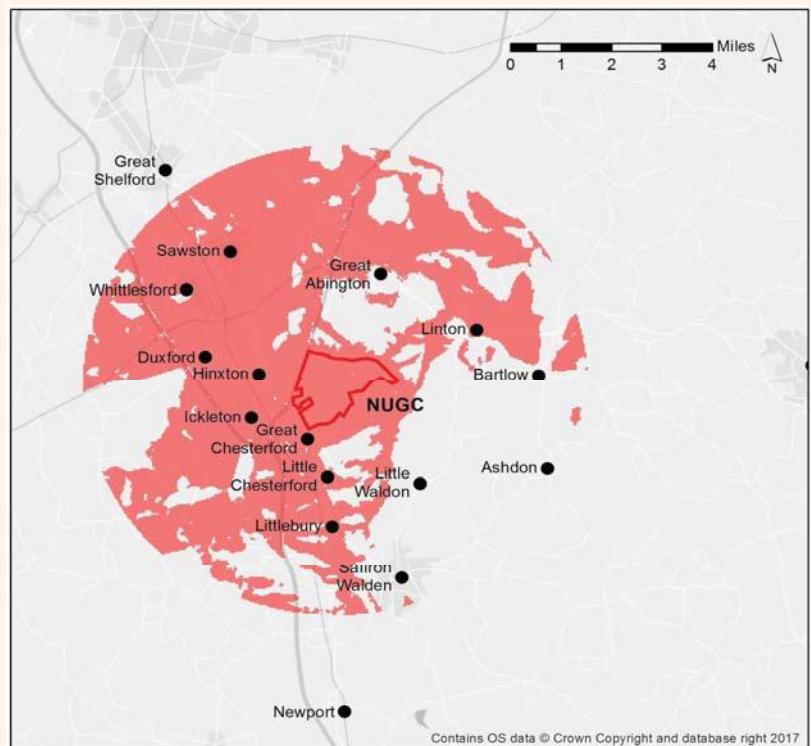
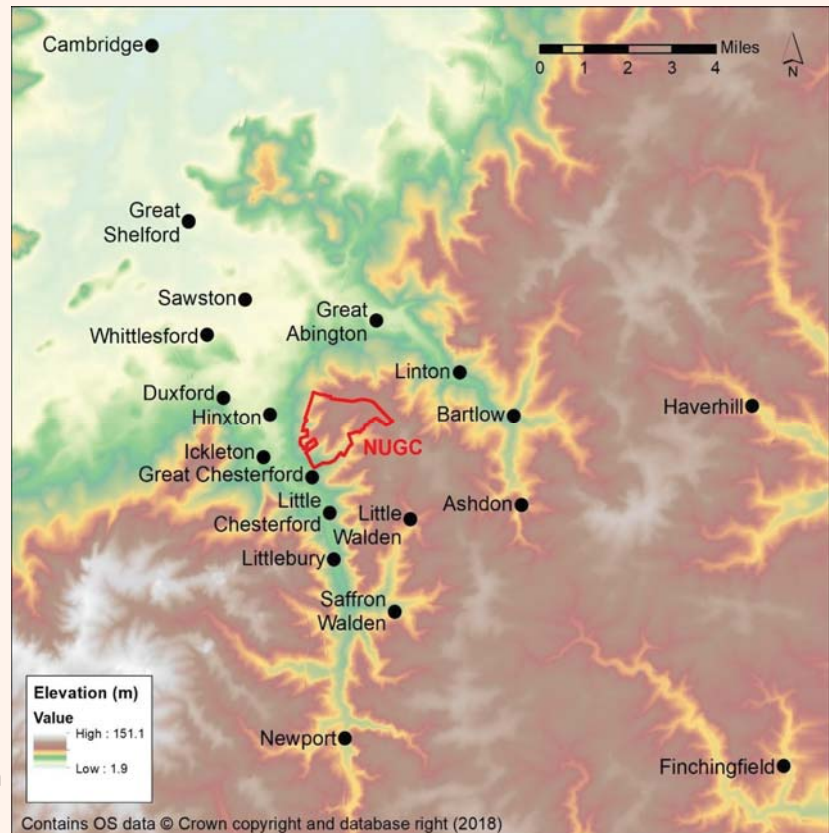
The worst site possible for a new town !

Many powerful comments have now been submitted to Uttlesford District Council attacking their choice of Great Chesterford for a new town. One of the more surprising is a study by Uttlesford resident **Nick Burton** demonstrating that the site is the worst possible in terms of visual impact that could have been chosen.

His first map shows how the proposed site of the NUGC sits on the hills of north-west Essex, over-looking a large area of South Cambridgeshire. He has then used computer-based visibility analysis on Ordnance Survey data to show the places within 5 miles of the site from where it is possible to see the proposed development site, even before any building has taken place on it. This is shown in red on the second map. It is clear that the impact is overwhelmingly on South Cambridgeshire

rather than Uttlesford. What he then did was create a digital model of north Uttlesford, breaking it up into 500m squares, and worked out for each square from which other square in a 5 mile radius you can see it.

The final computer analysis showed that the NUGC site has the largest cluster of extremely visible landscape in the whole of north Uttlesford. Furthermore, there is nowhere else in the District where the site could have greater potential impact. It would not be possible to choose a site more flagrantly in breach of both the National Planning Policy Framework, and the Uttlesford Local Plan's own stated policy for the 'Protection of Landscape Character'.



November 11th is the 100th Anniversary of the
end of the First World War

As a mark of respect and to commemorate this important time in British history there will be a special performance on the night of November 10th called "Farewell Leicester Square" in the Village Hall from 7pm.

Newscasts, poems and popular songs of the time will be woven around the events and the people of Hinxton village during that momentous period. Poignant letters from the trenches will be read and we will learn a bit more about our own brave lads who gave themselves to preserve the way of life we enjoy today.



There will be an entrance fee of One Old Penny (£1 in todays money)

Donations to Royal British Legion would be welcomed on the night.

You are invited to stay after the performance for light refreshments.

More information from Mike Boagey 01799-530216

PROPOSED CHRISTMAS SHOPPING TRIP TO ELY possibly 14th December

Tim Phillips will take us on a shopping trip to Ely in his wonderful bus.

We propose to leave early afternoon and then come home after the

Choral Evensong in the Cathedral that starts at 5:30.

The cost will be dependant on numbers so if you are interested please contact

Mike 01799 530216 or email: mikeboagey666@gmail.com

Sawston Library Fun Palaces

Saturday 6 and Sunday 7 October

What on earth is a Fun Palace? According to their website: "We believe in the genius in everyone, in everyone an artist and everyone a scientist, and that creativity in community can change the world for the better. We believe we can do this together, locally, with radical fun – and that anyone, anywhere, can make a Fun Palace."

The Friends of Sawston Library committee have taken this on, and have organised some intriguing events to encourage you into Sawston Library.

If you're already a member of Cambridgeshire Libraries, we hope you'll enjoy this new way of using our library. If you're not a member, do join - it's free! - and make Sawston Library your space too.



Saturday 6 October 2pm to 4pm:

Bridge design challenge . Can you bridge the gaps between shelves in the library using paper? Local volunteer Lucy Chapman will help you turn paper, nuts and bolts into an engineering tool. Recommended for ages 5 and up. You'll need to work in teams, so feel free to organise a team of four to six people, or join a scratch team on the day. If there's time, we'll also try making a massive marble run!

Sunday 7 October 11am to noon

That's Non-Sense! The Surprising Science of your Senses demonstration

Ever wondered why food tastes funny when you have a cold? Or what happens when you get dizzy? Science educator Ginny Smith will give us a whirlwind tour through the senses you're familiar with, and some you might never have heard of. Recommended for ages 7 and up.

Sunday 7 October 1pm to 2pm:

Illusion Busking workshop

Ginny Smith will help you make your own illusions to take home. All ages welcome.

All events are ticketed, and will be available from the beginning of September at Sawston Library during regular opening hours; tickets are

£1 each and you must be a member of Cambridgeshire Libraries or join up as you get your ticket. Joining and borrowing books is free! If the event hasn't sold out then tickets will be available on the door. Ages are a recommendation - you know your children best - but children must be accompanied. However, these events are for everyone - not just families! It should be a fun weekend.

Yasmin Emerson

Chair of Friends of Sawston Library





Steve Marshall

with Theresa Sullivan

Tell us about your early life

I was born in Derby. As a town of major heavy engineering excellence, the expectation growing up was that that was where I eventually would work. On leaving school I had various jobs before deciding on an apprenticeship in plumbing and heating engineering. Weekends were spent climbing or as a Mountain Rescue Volunteer in the Peak District. This proved to be invaluable for skills when at the age of 28, and in need of a change, I applied to work for the British Antarctic Survey (BAS). It felt like a wonderful opportunity to get paid for working in such an interesting part of the world.

Tell us about working in Antarctica.

In 1994 I initially went for a short trip to Bird Island in South Georgia. I discovered that working with BAS throws you into life with extraordinary people who respect and are reliant on each other. And the landscape and wildlife was amazing. It was a time of total isolation from the rest of the world. There were no mobile phones or email. Communication with home was 500 words on a half fax page once a month. I was hooked, and later that year I went back for a further two and a half years to work on research stations on mainland Antarctica.

In 1999 I was appointed as Station Commander for Halley research station. A unique role, day to day ensuring the safety and welfare of all staff, overseeing the annual resupply and wearing a number of special hats such as Magistrate and Postmaster, all linked to the UK claim to the British Antarctic Territory.

What is your role at BAS now

I am currently an Operations Manager heavily involved with plans for the running, maintaining, operating of RRS (Royal Research

Ship) Sir David Attenborough, due to be launched Nov 2018. It is a 130m long icebreaker designed to support multidisciplinary science e.g. oceanography and marine biology, as well as the important function to perform as supply ship to the UK Antarctic research stations. The construction of the ship is reviving ship building skills in Birkenhead, employing and

training a large number of apprentices as well as being a showcase for British Engineering. It is a very exciting project.

What was your worst moment while working in Antarctica?

It would have to be the moment I cut open a glove of an injured colleague and his severed finger dropped out! There was no doctor close by so I had to call A&E in the UK and explain the situation and ask for instructions. I attempted to put the finger back on, it lasted for 6 months but in the end was amputated by the professionals. I'm still a good friend with my 9 fingered friend.

What brought you to Hinxton

As Station Commander I had to commit to living in Cambridgeshire (spending UK summer's here and UK winters in Antarctica).

In 2001 I met Fiona while she was studying for her PhD. Shortly afterwards when working in the Arctic for 2 months we were fortunate enough to work together, Fiona employed as our polar bear guard and armed with a very powerful rifle (not a girl to be messed with!). We were married the following year. We arrived in Hinxton in 2008 with Finley only 8 Months old. In 2010 Lorna was born in Mill Lane making her a true Hinxtonian born and bred.

What do you like to do in your leisure time?

My heart is in mountains and wild places, so it can be deeply frustrating living in Cambridgeshire, however cycling the rural roads from Hinxton has been my saviour. As a family we enjoy holidays in the wildest places in Scotland and Wales and enjoy skiing in the Alps. An interesting project has been building a flint wall in our garden and embedding it with rocks from Antarctica, Greenland and other parts of the world we have visited.

What historical figure do you most admire?

It would be Ernest Shackleton for his great leadership qualities. He made good decisions to save his men and himself and he led with great respect for his men.

Do you like holidays? If you could choose to go anywhere in the world with the family, where would it be?

It would be to the Falkland Islands which are the size of Wales and have the population of Duxford. It is very beautiful with deserted beaches (not just because of the minefields!) We would have opportunities to see fantastic wildlife, such as albatross, penguins, dolphins, many types of seal and of course the odd sheep.

What do you feel has been your greatest achievement?

Being presented with the Polar Medal by HM the Queen. The occasion was on the centenary of Captain Scott and Ernest Shackleton receiving theirs.

Anything else you want to share with us?

While talking to Ros Smith, I learnt of Derek Searle who lived in Hinxton and is buried in the churchyard. In the 1950s he worked for the Falkland Island Dependencies and spent 2 1/2 years surveying Antarctica with the aid of husky dogs and sledges. He wintered with 8 others in a hut at Horseshoe Island. It would have been a very hard existence. In 1997 I had the pleasure of renovating this hut as an historic monument. I also took the opportunity to climb Mt Searle (named after Derek of course). To this day only a small handful of people have ever climbed that mountain, a nice coincidence.





The Friends of Hinxton Church are looking for some dry storage space, hopefully in the village and accessible at most times.

This will be for the props and costumes we keep for future events.

(An area the size of a small shed would be perfect)

Please contact Mike 530216 or

Joan 530917



We're interested in young people.....

Churches in our area have joined together to support young people and their families.



YOUTHINC— is for young people from 9 and 14 who enjoy the opportunity to get together, have fun, hear inspiring speakers, ask questions and explore answers. Youthinc is held on Sunday evenings once a month from 5:30-7pm. It's a good opportunity to meet others of the same age from nearby villages.

We will eating, playing games, having quizzes, watching videos, chatting and....**THINKING** !



How can WE make a difference in the world?

September 16th
Hinxton Village Hall :6:30-7:30 pm

Are you between 9 and 14 years old?

Do YOU want to make a difference?

Join us for a combination of fun, friendship, chat and food for thought.

AND a seminar about young people but for parents, teachers, grandparents, youth leaders and clergy—in fact anyone interested in the health and welfare of young people.

'How to Understand, Effectively support and Journey with young people through their concerns and anxieties'

Thursday October 18th
Hinxton Village Hall
7:30-9:30 pm

Seminar led by CAMHS
Child and Adolescent Mental Health Service

Calling all sleep deprived parents,

breast feeding babes in arms, teething tots, tantruming toddlers, hyperactive school children, reluctant tweens and everyone in between - come along and find out more about our new programme of activities

'Al2gether' for children of all ages starting this September.

Every Sunday at 10am our doors are open. There will be crafts, storytelling and new friends. We look forward to welcoming you.

Al2gether on Sundays

HINKLEDUX AT 10.00

Stories, songs, craft, worship

For ages 2 - 9 (During the service)



WELCOME

www.hinkledux.com

9th Sept Al2gether worship @ Duxford
16th Sept Communion & Al2gether @ Hinxton
23rd Sept Communion & Al2gether @ Duxford
30th Sept 5 Parishes Communion @ Pampisford



CAMBRIDGESHIRE HISTORIC CHURCHES TRUST

Ride, Drive and Stride

Saturday 8th September 2018

10am-6pm

Cycle, drive or walk around Cambridgeshire's churches
and chapels to raise money for the Trust and for the
church or chapel of your choice

Sponsorship forms and further information are at
www.camhct.uk/ride/

OR email cam.ride.drive.stride@gmail.com

OR ask **Ros Smith tel:01799 532064**

OR go to www.give.net/20037232/ specifying which church
you want to benefit from half the amount you raise.



CAMBRIDGESHIRE HISTORIC CHURCHES TRUST

Helping local churches and chapels with the cost of repairs and improvements.

Registered as a charity in England and Wales No 287486 www.camhct.uk



TIM PHILLIPS & Co. Accountants

Independent, specialist service for:
**Small Business • Self Assessment
Personal Taxation**

Free initial consultation – no obligation
EASY, FREE PARKING

Copley Hill Business Park, Cambridge Rd., Babraham
Off A1307 between Wandlebury and Babraham

Tel: 01223 830044. www.tpaccounts.co.uk



YOGA

Did you have a lovely summer ?

Classes resume Friday 9th September

Beginners and newcomers welcome

Hinxton Village Hall

Fridays at 9.30am £10 drop in

Newcomers always welcome

Please contact Zoë on 07956 644254

yoga@zoekirby.com

Keep up to date on

www.facebook.com/eatwellandbreathe

Hinxton Summer Crossword 2018

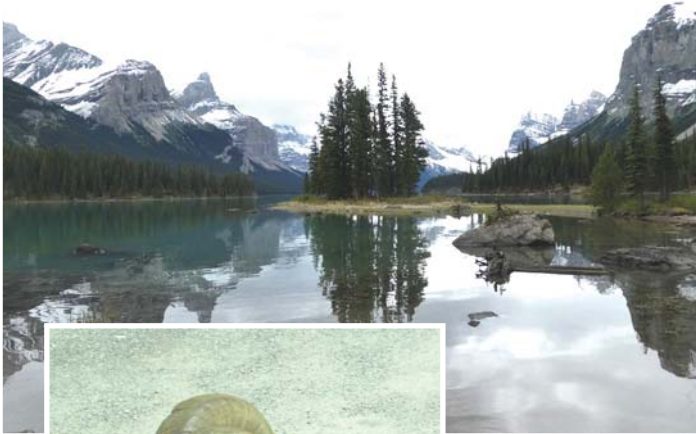
Solution by Steve Trudgill with

Jenny Goodwin and Steve Theobald

S	U	M	M	E	R	H	O	L	I	D	A	Y	S	I	S
O	N	A	A	V	E	M	A	L	T	A	B	E	A	K	
L	I	D	L	E	I	G	R	O	M	E	K	T	Y	N	E
C	T	E	D	R	I	V	I	E	R	A	O	E	G	G	
L	E	I	I	C	S	U	R	F	E	R	R	R	I	N	
I	H	R	V	R	S	A	F	A	R	I	Q	O	I	E	
F	E	A	E	U	R	O	S	T	A	R	U	W	A	S	
F	A	R	S	I	O	C	O	R	N	W	A	L	L	S	
R	T	C	O	S	T	A	D	E	L	I	Y	B	O	G	
I	H	F	U	E	R	T	E	V	E	N	T	U	R	A	
C	A	S	T	L	E	B	L	E	P	E	A	R	L	I	T
H	V	E	N	I	C	E	A	P	A	R	I	R	A	W	
A	I	A	I	N	O	R	K	S	R	I	M	I	N	I	
R	G	A	C	E	L	I	T	E	O	M	E	A	T	D	C
D	O	V	E	R	T	H	O	M	A	S	C	O	O	K	

Jane's Travel Snaps

Spirit Island, Lake Louise



Chipmunk



Wild Rockies Big Horn

Here are just a few of the hundreds of photos taken when Jane Chater toured Canada by train recently.



Bald Eagle



Cowboy Clint



Black bear



Elk



Columbian Ground Squirrel



**WELLCOME
GENOME
CAMPUS**



**Bedfordshire
Cambridgeshire
Northamptonshire**

WETLANDS EVENTS 2018

Wetlands Nature Reserve

**Come Along and
Join Us!**



Guided Bat & Night Creatures Walk

**Tuesday 11th September 2018
7.30-9pm**

**Come and join the Wildlife Trust staff to learn
new skills, discover exciting creatures on our
Guided Walks and have fun helping to manage
this nature reserve!**

**Join Wildlife Trust staff on an evening walk to discover the marvellous
world of Bats & Night Creatures.**

**Use Bat detectors to listen to their calls, learn about them and their
ecology.**

- * **Numbers are limited and booking is essential, closing date: 7th Sept 2018.**
- * **Friends & Family Welcome**
- * **We will confirm your place once booked and bookings will close once full.**

To book your place(s) email wetlands@wellcomegenomecampus.org

⇒ Please meet at Security Reception at 7.15pm

⇒ Please provide an emergency contact number with your booking.

Registered Office: The Manor House, Broad Street, Great Camboorne, CB23 6DH
Registered in England 2534145. Registered charity No. 1000412



MICHAEL SAUNDERS

INTERIOR & EXTERIOR PAINTING

♦ ♦ ♦ WHITTLESFORD BASED

♦ ♦ ♦ RELIABLE

♦ ♦ ♦ AFFORDABLE

Landline 01223 833365

Mobile 07855093435

Have you heard



Why not contact Trevor's team today to book a FREE hearing assessment and FREE 30 day trial ?

Call 01223 661399 or info@angliarhearing.co.uk or simply drop in and see

Advanced hearing technology now available right here in Cambridge



Suite 3,
Grain House
3 Mill Ct
Great Shelford
Cambridge
CB22 5LD



angliarhearing.co.uk

Celebrate the wonder of grass
with grass-inspired gifts

grassy & green gifts



Sara Gregson at www.talkinggrass.co.uk

Online shop. Save on delivery – pick up in Hinxton.
Also 'Cash on Collection' options at checkout.

giraffe

creative hair design

mobile hair stylist

07590 647123

E: tori@giraffehair.co.uk

The 'state of the art' Binwash van has become a familiar site in Hinxton. This family run business was established about 8 years ago by Jack Hutchinson and has enjoyed steady growth ever since. His 2000+ customers are spread over a wide area of north Essex but also extend into other Counties.

Jack was born in Braintree grew up in Great Bardfield and has lived in Saffron Walden for the last 10 years. His ambition is to be a recognised household brand throughout Essex. When he gets the opportunity during the quiet winter season Jack likes to travel the world. The growth of the business is now dependant on finding like minded people to take on some of the responsibilities of running their own district without constant supervision.

"We are regularly in Hinxton and would love more people to try our services and experience for themselves how good it is!"

Our rates start at just £4-00 a month and for a fresh and clean bin it is money well spent !



Binwash

The local wheelie bin cleaning service

Schools - Pubs - Restaurants - Shops
Households - Village Halls

- . Try us for as little as **£4** per month
- . Professional equipment
- . 4 weekly schedule or one-offs
- . Same day as waste collection

Environmentally approved bio-degradable products.



01799 529899

www.binwash-uk.com

enquiries@binwash-uk.com



Saturday 29th

September 2018

10:30– 12:00 noon

Church Green Cottage

Come and join us for this “must go to” event which has become a feature of Hinxton Village life over the past 11 years and has so far raised nearly £10,000

*** Bring & Buy ***

*** Raffle ***

*** Cakes and Bakes ***

Enjoy a coffee and some cakes with friends and neighbours have a sociable morning and together raise much needed money to help people affected by cancer

**WE ARE
MACMILLAN.
CANCER SUPPORT**



Exhibition – Curious Nature

Sat 15 Sept, 1-3.30pm

The Genome Gallery, Wellcome Genome Campus Conference CentreCurious Nature explores the Wellcome Sanger Institute's anniversary project to sequence the genomes of 25 species found in the UK. This project helps us build a picture of biodiversity in the UK and to understand, and tackle, our impact upon it. A lovely family-friendly exhibition, which you can visit during this month's Wellcome Genome Campus Open Saturday. Tours of Campus also available.

Open to all and free to attend but booking is essential.

Tickets: <https://publicengagement.wellcomegenomecampus.org/events/open-saturday>

Café Sci Cambridge: Can we refreeze the Arctic?

Wed 12 Sept, 7-8.30pm

The Locker Café, King Street, Cambridge, CB1 1LN

Discover how this ambitious global project aims to identify preventable causes of cancer by looking at the DNA 'fingerprints' of cancers caused by environmental and behavioral factors.

More information: www.cafescicambridge.org

Free, un-ticketed event.

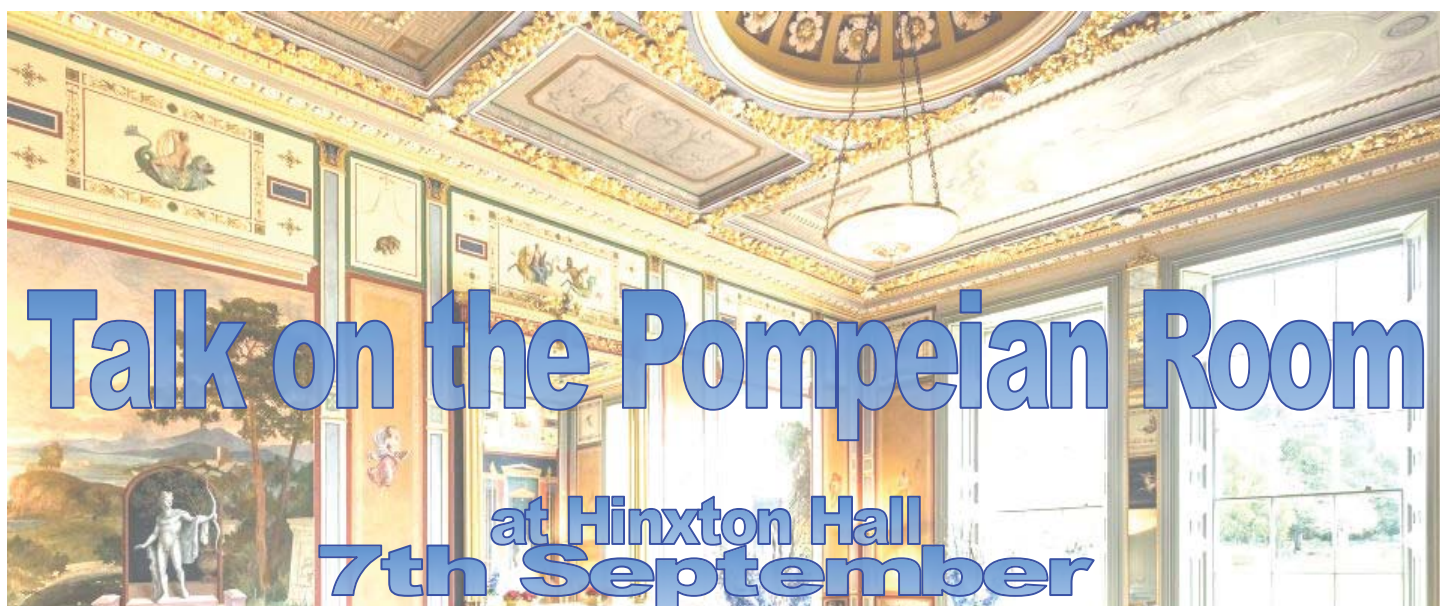
Cambridge LifeLab

Fri 28 and Sat 29 Sept

Cambridge, various locations

Come and share the fun, excitement and opportunity of life science happening across our region at Cambridge LifeLab, an extravaganza of discovery events happening in shopping centres, libraries, cafés and bars. Activities for all tastes and ages!

More information: www.camlifelab.co.uk



Join us at **Genome Lates** to discover more about Hinxton Hall's surprising and magnificent Pompeian Room with speaker Giorgio Bowler from the University of Cambridge. Giorgio will share his fascinating research into the creation of the room and the original works that formed the inspiration for the room's design. You will have the chance to visit the Pompeian Room for yourself, and the opportunity to visit the Genome Gallery and our latest exhibition, Curious Nature. Our bar will be open throughout the event serving a range of alcoholic, soft and hot drinks.

Event opens at 6pm, talk commences at 6.45pm

It is free to attend but booking is required

More information, and to book: <https://genomelates-pompeianroom.eventbrite.co.uk>

Invitation

All-Age Harvest Festival Service

followed by

Supper in the Village Hall



Sunday 7th October 5:00pm

Any contributions towards the food can be dropped off at the hall from 3:00pm.

There will be a box for dry-food donations for the Cambridge Food Bank in the porch for a few days before and after the service.

Please can we ask that these have a fairly long 'sell by/use by' date,

September Greetings to Hinxton Villagers from all at The Red Lion Inn Annual Garden Party

Thank you all who managed to make our annual joint birthday party last month. We were very lucky with the weather this year and **Claudette Burch** and her ACE jazz trio completed a very pleasant evening.

As ever, as well as all your generous support we were indebted to our loyal and generous suppliers for providing a heavily laden raffle table (Woodfordes, Wyken Fish, Cambridge Wine, Lacons Brewery, Burtons Butchers, Greene King, Cabana).

Also special mention is due to **Mike Miles**, a very loyal customer, who has for the second year been incredibly kind in offering two highly sought after local flights for auction.

We are delighted to have raised **£720** to split between our two village appeals this year – Hinxton Mill Painting Appeal and Balsham Village Church Community Room Appeal.

"Pint of Jazz" at The Black Bull Friday 14th September

Claudette Burch ACE jazz trio – free entry - no tickets required

We look forward to welcoming you & your friends

Kind regards

Alex, Nikol, Janice, Shane and the teams

01799 530 601 info@redlionhinxton.co.uk www.redlionhinxton.co.uk





Some of you may have seen me running and biking through the village these past months and wondered why!

This year alone I have completed 3000 miles on the bike, 550 miles running and 100 miles swimming in the pool, lido and at Milton Country Park. in order to complete the challenge of an **Ironman** before I am too old.

*For those of you that don't know, **Ironman** is the toughest triathlon event in the world and one of the most gruelling single day endurance events.*

This is a race of epic proportions a Swim of 2.4 miles in open water, Bike 112 miles and Run 26.2 miles (a marathon).

On Friday 27th July, with Sarah my friend Carl who was also competing and their family we set off for Harwich to catch the ferry to the Hook of Holland and the drive to Germany and into Hamburg.

Carl and Gayle have two daughters one of whom, Amelie, has the life limiting disease Cystic Fibrosis.



We are raising money for the Cystic Fibrosis Trust and Addenbrookes Hospital where Amelie spends many weeks of the year receiving IV antibiotics.

On Sunday the 29th July Carl and I set off at 6am to the start line for a slightly altered course as the swim was cancelled because of blue, green algae (a victim of the heatwave) and replaced with a 4 mile run! The day was once again hot and humid (28 degrees).

I completed the Ironman in a total time of 10 hours 47 minutes 25 seconds – run 29 minutes 58 seconds, bike 5 hours 41 minutes 50 seconds and marathon 4 hours 24 minutes 46 seconds Shattered but elated we drove home from Hamburg the following Monday.

What now? I suddenly have time on my hands. No longer do I need to get out of bed at 6am for a six hour bike ride. I am already plotting next years event. See you on the streets of Hinxton.

Paul Crocker

To make a donation please visit the [Virgin Money Giving](#) website and search for [Carl Pledger](#).

If you open the link on the donation page you will find information through a **Youtube** clip of an ITV News item concerning an ongoing campaign by the trust for a new drug called **Orkambi**.

THE TOWN ON THE HILL

There is a lull in the battle against the proposed new town on the hill overlooking Hinxton. With the opportunity for comments now closed, Uttlesford District Council will review them before submitting their Local Plan to the Planning Inspector. The public examination is likely to be in 2019. The campaign by StopNUtown has been impressive. Great Chesterford Parish Council has submitted a formidable legal opposition case in preparation for the public hearings. The cost of all this continues to be high and they deserve your financial help.

Our Hinxton comments are to be found on our village website. No less than nine South Cambs parish councils, appreciatively named

'The Rebel Alliance' by the Great Chesterford team, have sent in statements of opposition. Several are illustrated with views of the hills that the new town would trash. Challenging questions have been submitted by heavyweights: South Cambs District Council, The Wellcome Trust, our own MP, and our current and past District and County councillors.

Of great importance, there have been many critical personal comments sent in by individuals living around Hinxton. It is taking time for UDC to get comments onto its website, but please let us know if yours has not appeared by the end of September. This powerful opposition, and the intrinsic daftness of the new town site, give grounds for optimism that we shall win.

Willy Brown
(Chair, Hinxton Parish Council)

The Hundred Parishes Society

www.hundredparishes.org.uk

The index to the Society's new book refers to no fewer than eleven castles. All are shadows of their former selves, but many can still be seen and just a few may be visited.

Many were built soon after the Norman Conquest of 1066. These Norman castles are described as motte and bailey, consisting of a large mound of earth or rubble (motte) surmounted by a wooden or stone tower. Alongside would be an embanked enclosure with additional buildings .



A fine example of what a typical Norman castle may have been like exists at **Stansted Mountfitchet**.

Although little survives other than the mound on which the original castle once stood, a wooden stockade and village have been recreated.

The mottes are still visible from Norman castles at **Anstey**, **Great Canfield** and **Stebbing**.

The parish of **Castle Camps** takes its name from the castle dated back to Saxon times. **Clavering** castle's buildings were surrounded by a ditch which can still be seen.

Civil war raged in England between Stephen and his cousin Matilda from 1135 to 1153, a time known as The Anarchy which saw considerable castle building. Geoffrey de Mandeville, the Earl of Essex, swapped sides more than once. He built the castle at **Saffron Walden**. Some ruined walls still remain and they are Grade I listed, the finest surviving stone castle within the Hundred Parishes.

De Mandeville also built the castle at **Pleshey** during the Anarchy. The large motte still remains. The present village of Pleshey lies mostly inside the outer bailey earthwork which is clearly visible along much of its length.

Our area is rich in heritage so, as ever, I encourage you to go explore and see what you can discover!

Ken McDonald, Secretary

RECIPE RELAY



Simon Garnier is this month's guest cook. We love pasta dishes in our household, and have been fortunate enough to be served lasagna by Simon a few times over the years. His version is definitely the best we have ever tasted, the ragu sauce is bursting with flavour. Give it a try!

Linda

Ingredients for Meat Sauce

- Two medium-sized onions
- One whole star anise
- 3 cloves garlic
- 2 lbs of best mince
- $\frac{1}{3}$ of a bottle of full-bodied red wine
- 2 bay leaves (bruised)
- 1 tbsp of Worcestershire sauce
- 1 tbsp of white wine vinegar
- 1 tbsp of sugar
- $\frac{1}{4}$ tsp chili powder
- 1 tsp Sea salt
- 2 tsp Black pepper
- 1 Oxo Cube
- 3 tbsp Oregano
- 2 tins of chopped tomatoes
- 1 tbsp tomato purée

Béchamel sauce

- 50g butter
- 1 pint of milk
- 1 tbsp cornflower
- $\frac{1}{2}$ a whole nutmeg
- 150g mature cheddar cheese

Assembling the dish

- 1 pack of fresh lasagna sheets (dry can be used but may need cooking or rehydration before use)
- 300x200x50mm ovenproof dish
- Pre heat oven to gas mark 6 or 200°C 180°C for fan ovens

Method for Meat Sauce

Put the onions, garlic and star anise into a large pan, cook on medium heat until soft. Remove the star anise and add the mince continue to cook on a medium heat until mince has brown. Add the red wine, bay leaves, Worcestershire sauce, white wine vinegar, sugar, black pepper, sea salt and chili powder, bring to a simmer and reduce by two thirds. Add the Oxo cube, Oregano, tinned tomatoes and tomato purée and cook for a further 10 minutes on a medium heat or until the source has thickened.

Béchamel sauce

Melt the butter in a medium-sized saucepan, add the corn flour and cook for one minute. Pour in the milk add two thirds of the cheese and nutmeg. Continually stir and bring to a simmer, cook for a further minute until thickened.

Assembling the dish

Remove bay leaves and apply a layer of sauce to the bottom of the dish and cover with lasagna sheets do this twice more finishing with a layer of lasagna. Cover the dish with the béchamel sauce and sprinkle with remaining cheese.

Cook in a preheated oven for 15 to 20 minutes or until golden brown. Serve hot



Parsley



Sage



Thyme



Rosemary



Phil

This late summer early autumn weather is great and there are some enjoyable jobs to get down to. September is the optimal month for new planting of trees, shrubs and climbers and of course moving those that you feel are in the wrong place. The longer the plant has been in the ground the greater the risk of moving it but provided the soil is moist and you take a really good-sized root ball you are in with a chance.

With the very hot weather we have had this summer your lawn is perhaps looking very bare but with a few treatments it will recover and even improve for next year. For best results you need to weed with a blunt knife, rake out the thatch with a spring tined rake or scarifier and make plenty of holes as deep as you can, a garden fork will do for this. Now for the top dressing, a mix of sand, loam and organic matter such as compost should be brushed into the holes with a broom, it may look messy for a day or two but the lawn will love it. An autumn lawn feed will help the grass survive the winter but avoid summer lawn feed as the nitrogen will encourage soft growth which won't cope when the colder weather arrives.

Another important job is to dig up and divide congested clumps of perennial plants replanting the smaller plants for healthier plants next year. Shrubs and climbing roses should be pruned now if they have finished flowering. If the shrub or rose is over 3 years old use the one third pruning method, this is to remove one third of the oldest stems each year so new shoots replace the old and keep the shrub compact and vigorous.

I hope you enjoy the cooler weather and getting on with the many jobs that early autumn brings.

Rosemary

So, the need for watering is over and almost immediately the ground looks as though it is covered with duckweed with their seedlings growing in profusion everywhere.

Time to start hoeing!

Would that we could just set the seeds and come back later to harvest the fruits of our minimal labours. Actually this is not a dream, it is possible and you don't even need a garden to do it. There is a technique called the Kratny method where the plants are grown over a pot of water with feed in it. It is a simple set up. You can use flower buckets with a tray on top.

- ⇒ **Cut 3 holes in the tray for 2" net pots to sit in.**
- ⇒ **The seeds are then individually set in a little coconut fibre in the net pots.**
- ⇒ **Fill the container below with water and feed and then by the time the water is gone the plants will be ready to pick, the roots chase the water down.**
- ⇒ **Just set, wait, pick.**

It works for many plants and I have had particular success with lettuce and pak choi. In fact I think this is the only way to grow pak choi successfully and I manage to grow much bigger plants than you see in the supermarket.

On YouTube you will find people doing it using all sorts of containers, large and small.

.....Search KRATNY

Phil

Events in September

1st	Saturday	Ickleton Social Club Quiz Night 8:15
2nd	Sunday	2:30-5:30 Mill Opening 6:30 Evensong
3rd	Monday	
4th	Tuesday	 Green and Blue Bins
5th	Wednesday	Gardening Society "NUTS" Ickleton Hall 8pm
6th	Thursday	
7th	Friday	Gardening Society visit to Hyde Hall RHS 11for 11:30
8th	Saturday	Ride Drive & Stride p.11
9th	Sunday	8:00am Holy Communion
10th	Monday	Parish Council Meeting 7:30
11th	Tuesday	 Black Bin
12th	Wednesday	 10:00am Coffee Morning
13th	Thursday	
14th	Friday	BINGO for VEGETABLES
15th	Saturday	
16th	Sunday	Parish Communion with Altogether for Children
17th	Monday	
18th	Tuesday	 Green and Blue Bins
19th	Wednesday	Mobile Library War Memorial 12:20-12:35
20th	Thursday	
21st	Friday	Day of Prayer for Peace
22nd	Saturday	Battle of Britain Air Show, Duxford (Saturday and Sunday)
23rd	Sunday	6:30pm Evensong
24th	Monday	
25th	Tuesday	 Black Bin
26th	Wednesday	
27th	Thursday	Tiddlers, St Peters Duxford 10:00-12:00
28th	Friday	
29th	Saturday	3 Parishes 10k Walk in Aid of St Peters, Duxford 12:30 start Macmillan Coffee Morning P.17
30th	Sunday	5 Parish Eucharist, Pampisford

Notable Future Dates

Oct 7th **Hinxton Watermill**
The last time this year

Oct 7th All Age Harvest Festival
Service followed by supper in
the Village Hall p.15

Oct 10th **Coffee Morning**

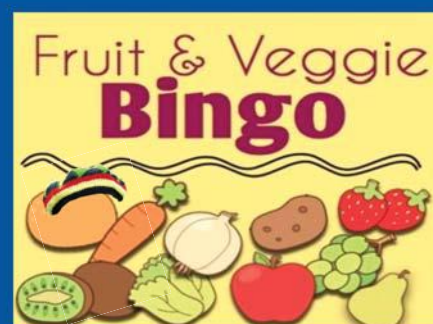
Nov 10th
"Farewell Leicester Square"
*A commemoration of the end of
the First World War
in words and song*

Nov **Coffee Morning**

Nov 24th **SILENT AUCTION**

Nov 30th **A Xmassy Bingo**

Dec 12th **Coffee Morning**



14th Sept

7:30 start Village Hall

Only £3

includes one card and refreshments

Graham is BACK !