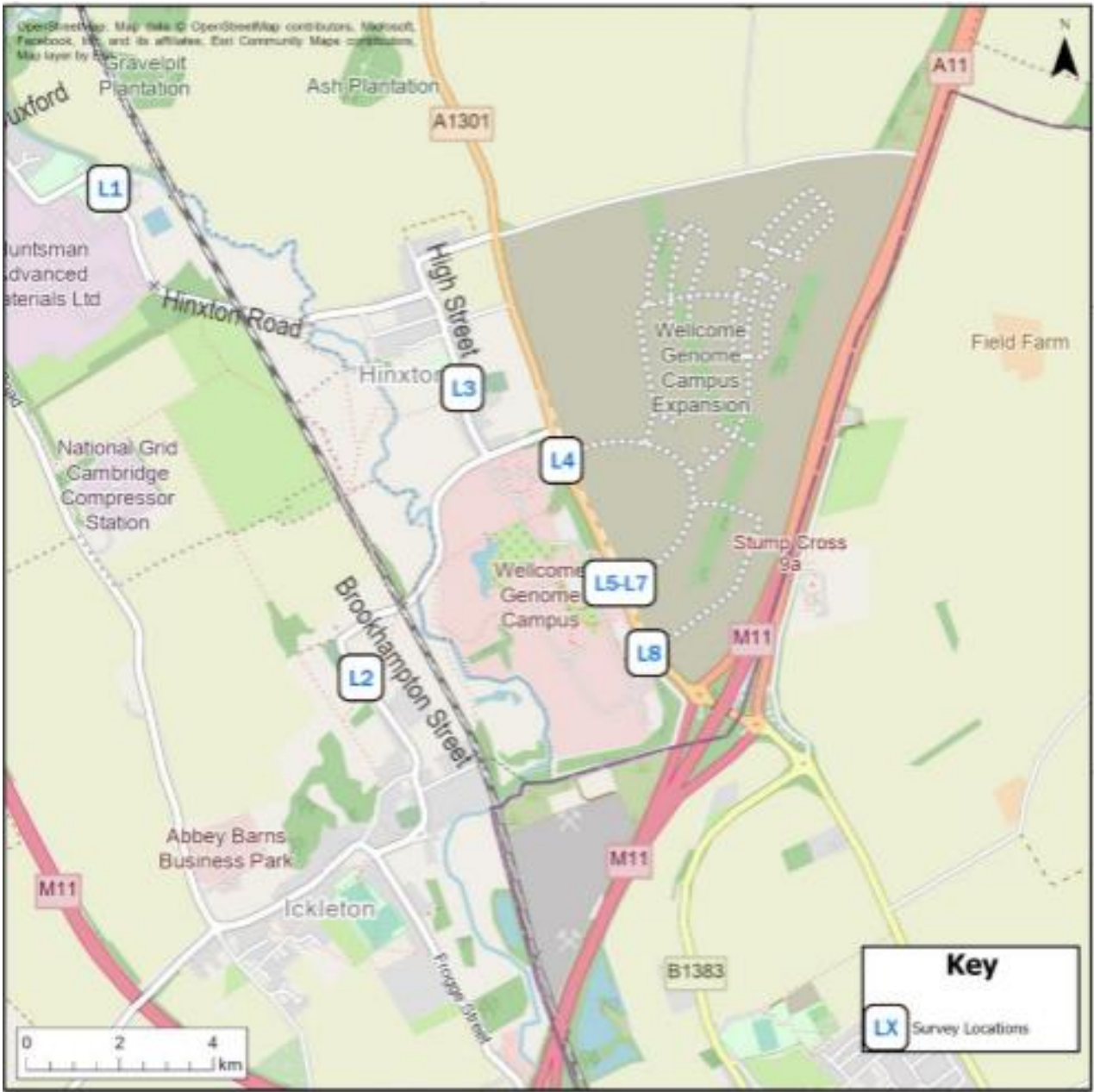


ANPR

- Locations agreed with Cambridgeshire County Council
- Positions selected on roads to pick up vehicles travelling through the villages to Campus
- The scope of the ANPR is defined in the S106



Location	Site ID (see Figure 1)	Proposed Power Supply (see Appendix B)
Hinxton Road (south of St Peters St)	L1	Lamp Column
Brookhampton St	L2	Lamp Column
High Street (southern end of Hinxton)	L3	Lamp Column
Wellcome Genome Campus Expansion Proposed Northern Roundabout	L4	New Lamp Column provided as part of new roundabout
Existing Wellcome Genome Campus Roundabout (Proposed Eastern Arm)	L5	New Lamp Column provided as part of new eastern roundabout arm
Existing Wellcome Genome Campus Roundabout (Existing Western Arm)	L6 + L7	Existing Lamp Column on access roundabout
Wellcome Genome Campus Expansion Southern Access	L8	New Lamp Column provided as part of new access